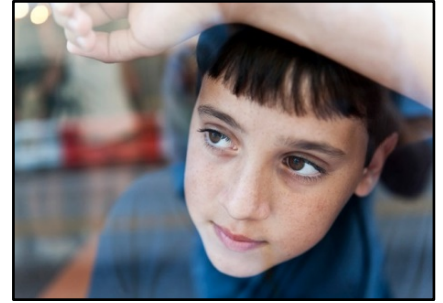


# Emotional Support

## Central Education Center

The Emotional Support Program at Central Education Center (CEC) services students from Kindergarten through 8th grade who struggle behaviorally in a traditional school setting. The program operates on behalf of the 22 public school districts in Lancaster and Lebanon counties. The program is designed to meet the students' academic, functional, emotional, and behavioral needs while preparing them for a return to their home school district.



### Classroom

Emotional Support at CEC offers a low student-to-staff ratio and specialized instruction to meet the needs of the students. The focus of the program is to support the students' behavioral needs while providing individualized and small group academic instruction to promote learning at or near the students' grade level. Instruction related to functional needs is addressed on an individual basis. CEC also provides students with a safe environment, away from other students, should a student engage in unsafe behaviors. Emotional Support at CEC is a center-based Emotional Support program that is able to serve all students **with IEPs which address their educational disabilities**.

The students are placed in classrooms by grade level. The center houses classrooms for students from Kindergarten through 8th grade. Classroom assignments are made according to state regulations relating to age ranges.

The students receive academic instruction through individualized and small group instruction at the students' instructional levels. Students are 1:1 with technology, using either a Chromebook or iPad. A STEM/computer lab is available to reinforce instruction in all content areas.

The students receive direct instruction of social skills three times daily. The program uses a scope and sequence to provide consistency throughout the building. "Zones of Regulation" is the core curriculum. Many other curriculum options are available so that the teacher can best meet the needs of the students in their classroom. These skills are practiced throughout the school day.

The students receive instruction in functional areas through community-based instruction and through the use of the Annex at CEC, a functional on-location site for students to practice daily living skills.

The students also have access to the Sensory Room, full-size gymnasium, and a large outside recess area. Students are able to utilize these rooms for free play and to engage in activities that assist them in regulating their emotions.

### Staff Support

In addition to the classroom staff, the students and staff are supported by two Special Education Consultants, Social Worker, School Psychologist, and four Behavior Support Assistants. A Certified ABA Analyst is available on site to consult with the IEP team when appropriate.

### Counseling

School-based counseling services are provided by PA Counseling. Students must be MA eligible.

### Contact Information

Lancaster-Lebanon IU13  
Bonnie Rudi, Supervisor  
717-606-1775  
bonnie\_rudi@iu13.org

