

IU13 is committed to delivering exemplary service to its community. As part of this commitment, IU13 staff are constantly seeking ways to use "promising practices" to increase student outcomes.

**Promising Practices Exemplars:**

- ExCEL@IU13: Expanding Capacity for Environmental Literacy at IU13
- School-based Partial Hospitalization Program



**PROMISING PRACTICES**

## ExCEL@IU13

With the goal of providing IU13's center-based emotional support classrooms with rigorous and relevant science education aligned with the new PA academic standards for science, technology, engineering, and environmental education, in 2021, IU13 was awarded a 3-year, \$346,000 grant through the National Oceanic and Atmospheric Administration (NOAA) to support these efforts.

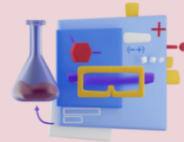
### ExCEL@IU13 - Expanding Capacity for Environmental Literacy at IU13



Supporting IU13 Center-based Classes



Environmental Literacy Plan



Rigorous & Relevant Science Education

**14**

Educators Served

**83**

IU13 Students Impacted

## School-based Partial Hospitalization Program

In a partnership designed to support both the significant emotional/mental health needs and education needs of students, Community Services Group (CSG) and Lancaster-Lebanon Intermediate Unit 13 (IU13) developed the School-based Partial Hospitalization Program. Both agencies will coordinate services to seamlessly complement and support each other in providing a successful therapeutic and educational environment for enrolled students.

### School-Based Partial Hospitalization Program



Individual, Group & Family Therapy



Educational Services



Year-Round Program

Relocated in 2021 to

accommodate future expansion & student needs